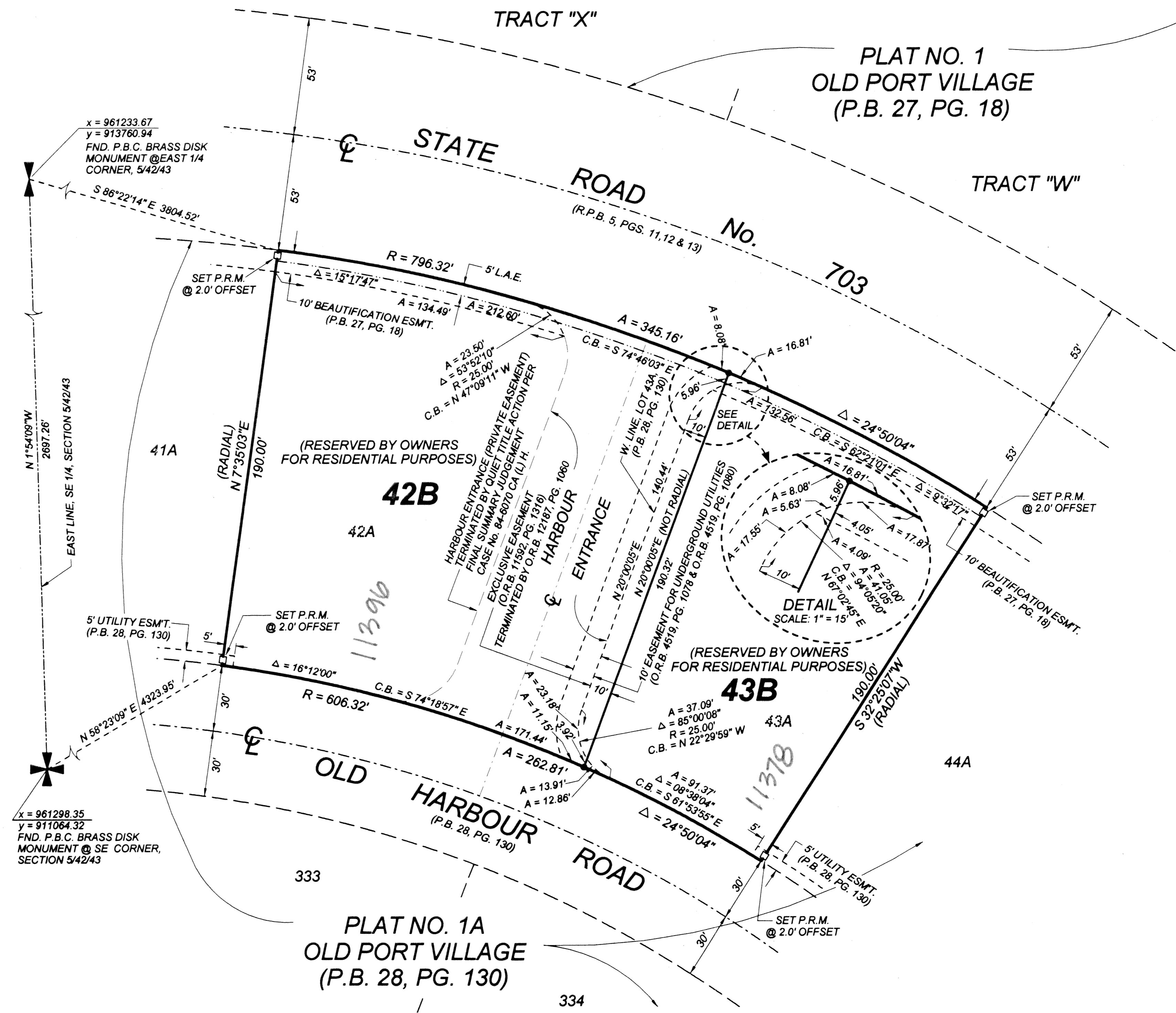


OLD PORT VILLAGE PLAT NO. 1-A REPLAT NO. 2

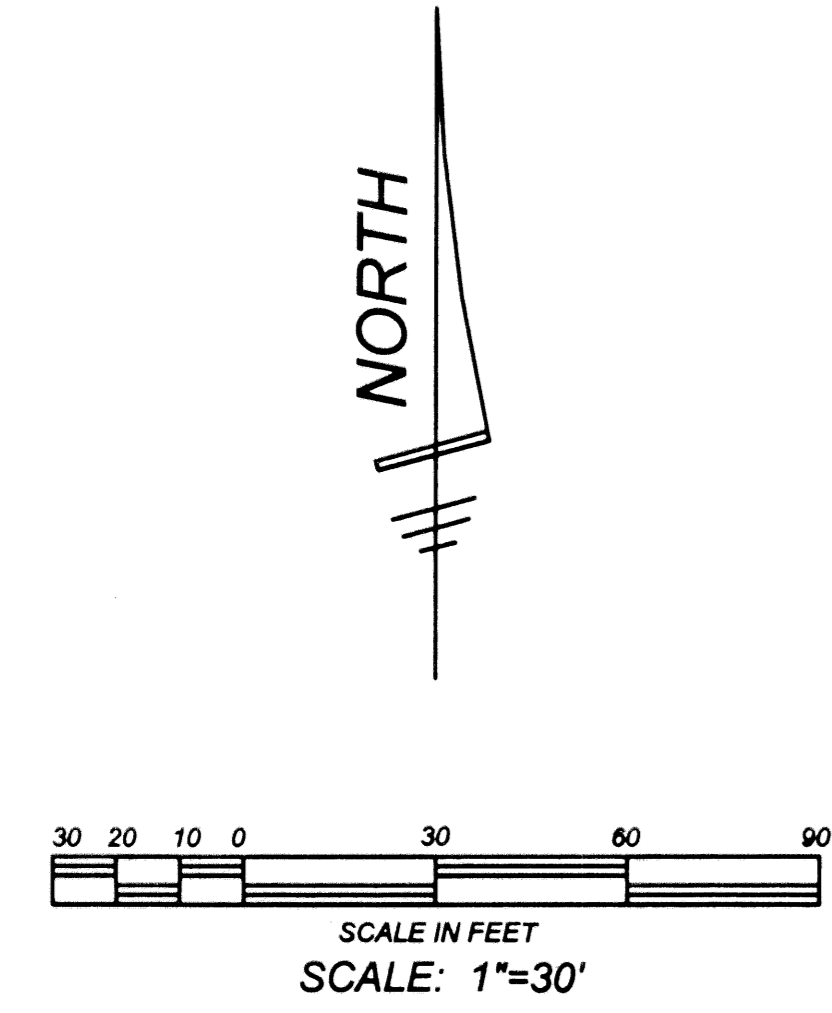
Being a replat of Lot 42A, Lot 43A and Harbour Entrance, Old Port Village Plat No. 1-A, according to the plat thereof, recorded in Plat Book 28, Page 130, Public Records of Palm Beach County, Florida, lying in Section 4, Township 42 South, Range 43 East, Palm Beach County, Florida.
MARCH, 2001

SHEET 2 OF 2

BEARING ROTATION EQUATION:
N 01°54'09"W (PLAT BEARING)
N 01°22'27"W (GRID BEARING)
00°31'42" = CLOCKWISE BEARING ROTATION (PLAT TO GRID)



- ABBREVIATIONS & SYMBOLS**
- 1. = Denotes Permanent Reference Monuments (P.R.M.'s). Stamped P.R.M. P.L.S. # 3357.
 - 2. C = Centerline.
 - 3. R/W = Right of Way.
 - 4. P.B. = Plat Book.
 - 5. P.G.(S) = Pages.
 - 6. SEC. = Section.
 - 7. TWP. = Township.
 - 8. RGE. = Range.
 - 9. U.E. = Utility Easement.
 - 10. D.E. = Drainage Easement.
 - 11. X = "X coordinate", states the given position of a point (expressed in feet and decimals of a foot) in an East and West direction.
 - 12. Y = "Y coordinate", states the given position of a point (expressed in feet and decimals of a foot) in a North and South direction.
 - 13. A = Arc Length.
 - 14. Δ = Central Angle.
 - 15. R = Radius.
 - 16. C.B. = Chord Bearing.
 - 17. O.R.B. = Official Record Book.
 - 18. R.P.B. = Road Plat Book.
 - 19. L.A.E. = Limited Access Easement.
 - 20. P.O.C. = Point of Commencement.
 - 21. P.O.B. = Point of Beginning.
 - 22. P.B.C. = Palm Beach County.
 - 23. ESMT. = Easement.
 - 24. = 5/8" iron rod with cap stamped "WALLACE LB4569"



SUBDIVISION OLD PORT VILLAGE No. 1-A REPLAT No. 2
BOOK 94 PAGE 133
FLOOD ZONE FLOOD MAP # 171 B
QUAD # 17 ZONING RS
SE. ZEP CODE 3240B
TAZ 71
FUD NAME

**OLD PORT VILLAGE
PLAT No. 1-A REPLAT No. 2**

WALLACE SURVEYING
CORP. LICENSED BUSINESS # 906
801 NORTHPORT PARKWAY, SUITE 117, WEST PALM BEACH, FLORIDA 33411 (561) 840-4551

FIELD: F.G.	JOB No.: 83-324 "C"	F.B.:	PG.:
OFFICE: R.C.	DATE: JUNE, 2000	DWG. No.:	83-324-2
C'K'D:	REF: 83-324P.ZAK	SHEET	2 OF 2